

# SP ProFlange<sup>®</sup> 30

Professional Package with IT  
for Flange Flatness and Parallelism



# Content of Professional Package with IT for **Flange Flatness** and **Parallelism**

## SP ProFlange® 30

### T330 Self Levelling Sweep Laser (BG 830203)



The T330 levelling laser makes even difficult measuring tasks easy!  
A laser transmitter transmits the signal and a detector measures the beam position. Done!

### R310 II Laser Receiver (BG 830140/1)



The R310 measures the position of the rotating laser beam. The CCD Sensor has total measurement range of 80mm. The beam forms an entire reference plane. The R310 is wireless and can measure up to a distance of 80m from the Laser.

### R525 2 axis Laser Receiver with battery charger, mobile viewer SP V520 and power supply (SP R525-P)



The R525 is a rugged but precise 2D Laser-Position detector. It was developed originally for machine tool alignment applications. Because of the Wireless interface and its versatility it is used today in a multitude of applications. Together with the ProLineV2 Software application we measure XY and Z simultaneously. If we use the T330 as a laser source we have a reference which automatically levels itself. These features together are very powerful and save a great deal of time on-site.

## DU 320 Rugged UMPC with touchscreen (IT 200410)



### Rugged UMPC for industrial on-site.

The UMPC offers protectors, shockproof design, holder for hand/arm.

- Change External Batt-Pack during use.
- Shockproof
- Water resistant

Standard accessories: IT 200207 External Li-Ion Akku.

Optional accessories: IT 200208 Extern Charging station for IT 200207

## RC310 Remote Control for T330 and R310 Monitor (BG 830930)



- Remote control for the T330
- Remote Display of current R310 values

### The RC310 is of great practical use in most applications:

- for establishing reference lines in roll parallelism
- for adjusting the T330 laser position
- it saves you a great deal of shoe leather on-site

## T330 Flange Mounting Kit (BG 830580)



This adapter is of great practical help for measuring the flanges. It can be used to install the T330 in vertical position at the flange.

## Mounting Kit for T330 (BG 830205)



Using the swivel and tilt adapter you can align the laser level, irrespective of the surface below. The Adapter also allows for a parallel movement which is very useful when aligning the laser parallel to a reference object. The Adapter is accommodated with a 5/8" thread, and is also fitted with a three-point magnet arrangement underneath.

## Power supply cable for T330 / R310 (BG 800026)



Power supply cable for the T330 / R310 with straight plug.

12 V, 450 mA  
incl. adapter

## Adapters for the measurement of flange parallelism (BG 830295)



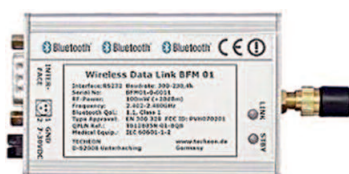
This adapter set is of great practical help for measuring flange parallelism. There is an adapter for the R525 Receiver and an adapter for the T330 Laser. After measuring the first flange, the adapters with their Sensors are exchanged, the tripods are remaining at their position. After re-aligning, the second flange can be measured parallel to the first.

## Bluetooth-Kit for R310 II and R310 II-BT (BG 830550)



### Bluetooth extension for R310

Bluetooth kit for upgrading a R310 Laser Receiver. Ideal for flange measurements and in places not suitable for working with cables.



- BT Class 1
- RF Power: 100 mW
- Operating distance: up to 100 m

## Magnet with spring – Probe-tip (BG 830195)



This adapter is used together with a R310. It separates the holding function from the measuring function. It is essential for flange measurement for example. The linear guide and the probe-tip contact rather than a surface contact is essential for precision measurements. Inside is a spring mounted that ensures a good contact to the object.

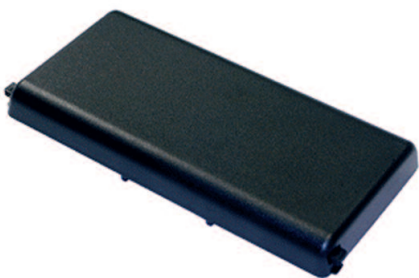
## Screw adapter M8 (FIX 1-0629)



Screw adapter with an M8 thread to enable the R310 or R280 to be mounted on different objects.

Installed adapter length: 30 mm

## External Battery for DU320 (IT 200207)



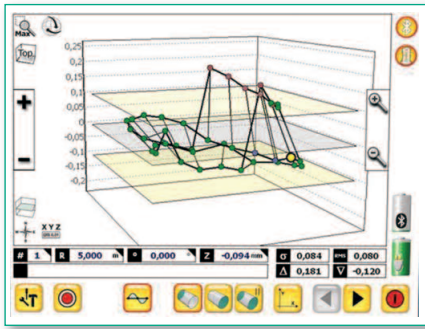
External battery for the display unit DU 310 and DU 320. While using a second battery at the display unit, the first will be charged in the charging station. The external battery pack can be changed during use.

## Battery charger DU320 (IT 200208)



External battery charger for batteries of the display unit DU 310 and DU 320. While using a second battery at the display unit, the first will be charged in the charging station. The external battery pack can be changed during use.

## ProFlange v2 starter license for R310 (SW 200020)



### ProFlange V2 – Flange flatness and parallelism

The simple allround solution

- Automatically connection management, wireless via Bluetooth
- 2D and 3D Views, free rotation in 3D
- Data view with all measurement and analysis results
- short waviness and flange angle at a glance
- No limit to the amount of points to be measured
- One click report with all graphics and values in pdf format
- Easy to use touchscreen software

## Big laser system case with foam inlays (BG 990105)



Rugged Case IP65 with wheels and telescope handle.

The small case is complete with the following main foam inlays:

- BT 990020: Foam inlay for R310BT R525
- BT 990027: Foam inlay for UMPC
- BT 990029, BT 990030: Foam inlay for T330

Please contact us for further informations or questions.



Status Pro Maschinenmesstechnik GmbH  
Mausegatt 19  
D-44866 Bochum  
Phone: + 49 (0) 2327 - 9881 - 0  
Fax: + 49 (0) 2327 - 9881 - 81  
www.statuspro.com  
info@statuspro.com

PC 1028E 10/11 · Design / DTP: Seichter & Steffens Grafikdesign, D-44229 Dortmund.  
Copyright 2011 Status Pro Maschinenmesstechnik GmbH. ProFlange® is a registered trademark and subject to trademark rights of Status Pro Maschinenmesstechnik GmbH. This document or parts thereof may not be copied or otherwise reproduced without the permission of Status Pro GmbH. The technical details are subject to change without notification.

We would appreciate being informed of any errors in this document.

Distributor